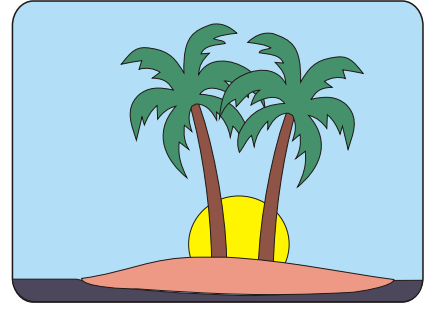


ITIM SYSTEMS

PTY LTD

INNOVATIVE TECHNOLOGY FOR INDUSTRY AND MARINE
P.O. BOX 218 RED HILL, QLD 4059, AUSTRALIA
4 CRAMOND STREET, WILSTON, QLD 4051, AUSTRALIA
ISD + 61 7. PHONE (07) 3356 1276. FAX (07) 3356 5693
http://www.itim-systems.com email info@itim-systems.com



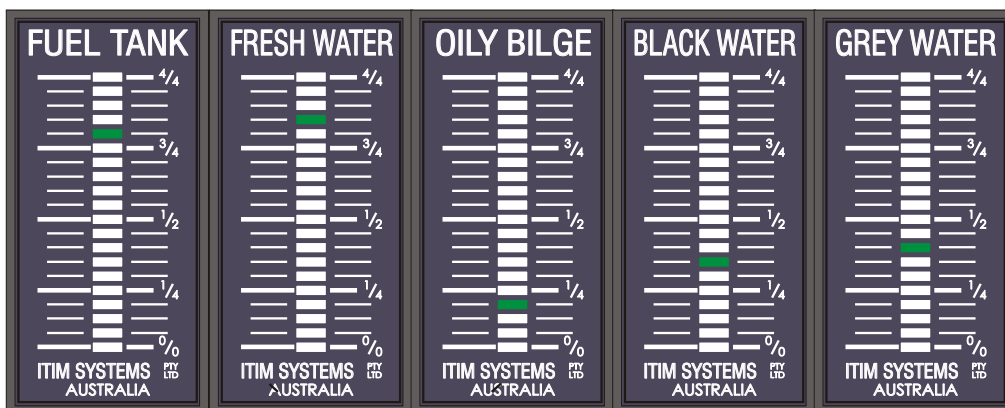
BG-98 20 LED BARGRAPH TANK LEVEL DISPLAY MODULE

This system provides a good looking, easy to read and accurate display of the contents remaining in your tanks. Suitable for Fuel and Fresh Water Tanks, Grey and Black Water Holding Tanks and Oily Bilge Water Tanks etc. With no moving parts or electrical connections in the tank to give trouble, it is easy to install and should provide reliable service for many years.

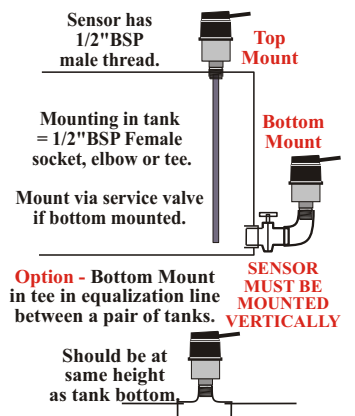
TLMP-98 Tank Level Monitoring Probe:

Suitable for Fuel Tanks up to 3.5 metres deep and Fresh Water and Holding Tanks up to 3 metres deep. The TLMP-98 Tank Level Monitoring Probe incorporates a sensitive solid state pressure transducer to measure the level of liquid remaining in the tank and provide a linear 4-20mA output with an accuracy of +/-1%. The Sensor is housed in a 316 stainless steel enclosure measuring 38mm(dia) x 65(h) mm with stainless steel 1/2" BSP(M) mounting thread. The Top Mount Sensor incorporates a length of 1/2" stainless steel sounding tube which extends to the bottom of the tank.

A 1/2" BSP (F) thread should be incorporated into the tank for sensor mounting, in an accessible position, with clearance above. It can be mounted into the top of the tank (TOP MOUNT) or mounted externally via a shutoff valve assembly at the bottom of the tank (BOTTOM MOUNT). (Refer to drawing below). It can also be mounted into a tee, in equalization lines between tanks.



TLMP-98 Tank Level Monitoring Probe Mounting Options



BG-98 20 LED TANK LEVEL DISPLAY MODULES

20 LED Bar Graph Tank Contents Display Module:

The 20 LED Bar Graph Tank Contents Display module, is a compact, flush mounting module measuring 36 x 72 mm, x 86 mm deep, with a four way plug-in terminal on the rear for connection of sensor and DC power supply. The 20 LED Bar Graph Display, is colour coded to provide a green LED display when working in the top range of the tank (35%-100%), changing to amber LEDs at 35% and then to red LEDs below 15% as the tank nears empty. (Reverse for holding tanks).

Duplicate LED Bar Graph Modules may be connected to the same sensor via a retransmitter module to display the Tank Contents at different locations. Digital Tank Contents Display Modules and Alarm/Pump Control Modules are also available. This Tank Contents Monitoring Probe and Display System can be powered from 12 or 24 volts DC. The TLMP-98 sensor is a 4-20 mA loop powered sensor with 2 core shielded wire between sensor & display.

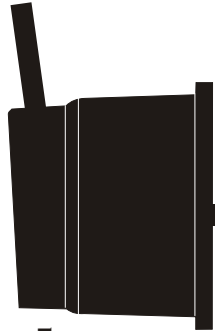
Calibration: We need to know the depth of your tank, the mounting type required, the type of liquid in the tank, and the operating voltage so we can custom build and precalibrate the Probe and Display to suit your tanks.

Made with Pride in Australia

Available from

TLMP-98 SENSOR
 LOOP POWERED
 +10 to 36 VDC FEED
 4 - 20 mA OUTPUT
 316 STAINLESS STEEL

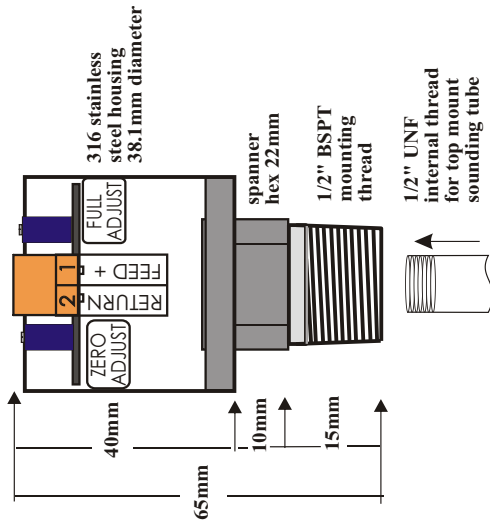
Rubber Boot
 Fits over sensor
 body & terminal
 to protect from
 water entry.



23mm
 when fitted.

Suggested cable
 out = 2 core
 16/020 tinned
 with overall
 shield.

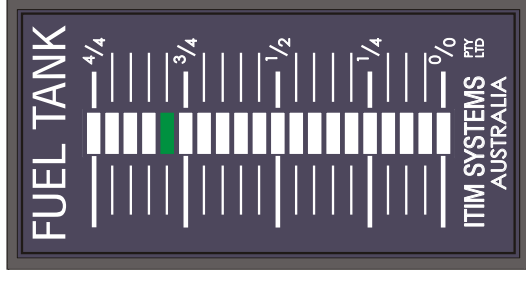
Two way
 plug-in
 terminal
 1. Feed +ve
 2. Return -ve



*** CAUTION ***
WITH BOTTOM MOUNT SENSOR *

1. IF TANK EMPTY, OPEN BALL VALVE BEFORE INSTALLING SENSOR.
2. IF TANK CONTAINS LIQUID, INSERT SENSOR, 3 TURNS ONLY, THEN OPEN BALL VALVE AND CONTINUE INSTALLING SENSOR.

SENSOR WILL BE DAMAGED IF SUBJECTED TO OVER PRESSURE DURING INSTALLATION, CAUSED BY COMPRESSING THE SMALL AIR GAP BETWEEN THE SENSOR AND THE BALL VALVE.

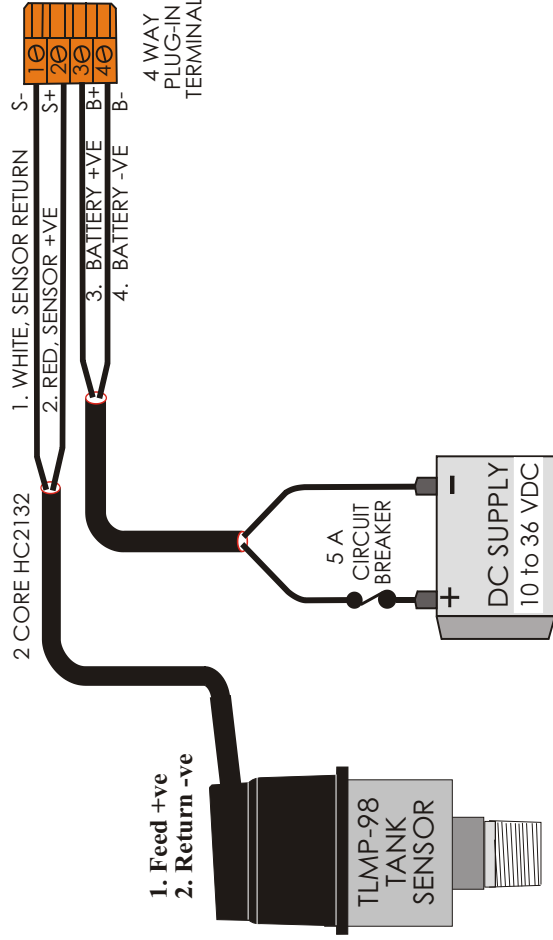


BG-98
 20 SEGMENT BARGRAPH
 TANK LEVEL DISPLAY

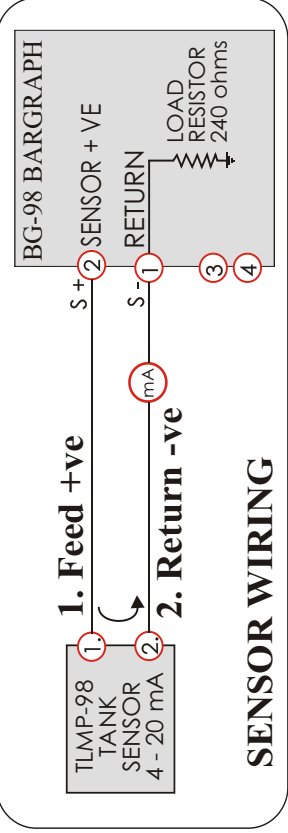
DASH CUT OUT
 = 67 x 32 mm

OTHER BG-98
 DISPLAY MODULES
 INCLUDE

- FRESH WATER GREY WATER
- BILGE WATER BLACK WATER
- PORT FUEL MID FUEL AFT FUEL
- LUBE OIL USED OIL HYD OIL



**SENSOR
 MUST BE
 MOUNTED
 VERTICALLY**



ITIM SYSTEMS PTY LTD
 INNOVATIVE TECHNOLOGY FOR INDUSTRY AND MARINE
 4 CRAMOND STREET, WILSTON, QLD 4051, AUSTRALIA
 P.O. BOX 218 RED HILL, QLD 4059, AUSTRALIA
 ISD + 61 7. PHONE (07) 3356 1276. FAX (07) 3356 5693
<http://www.itim-systems.com> email info@itim-systems.com

BG-98 - TLMP-98 SITE WIRING

BG98DS01 UPDATE TO SEP-98 GDS