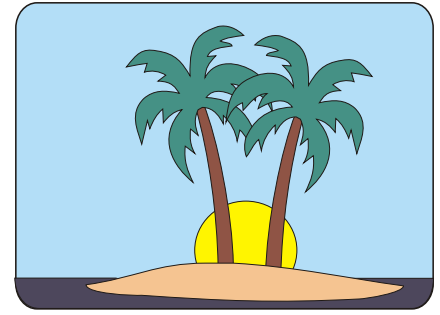


ITIM SYSTEMS

PTY LTD

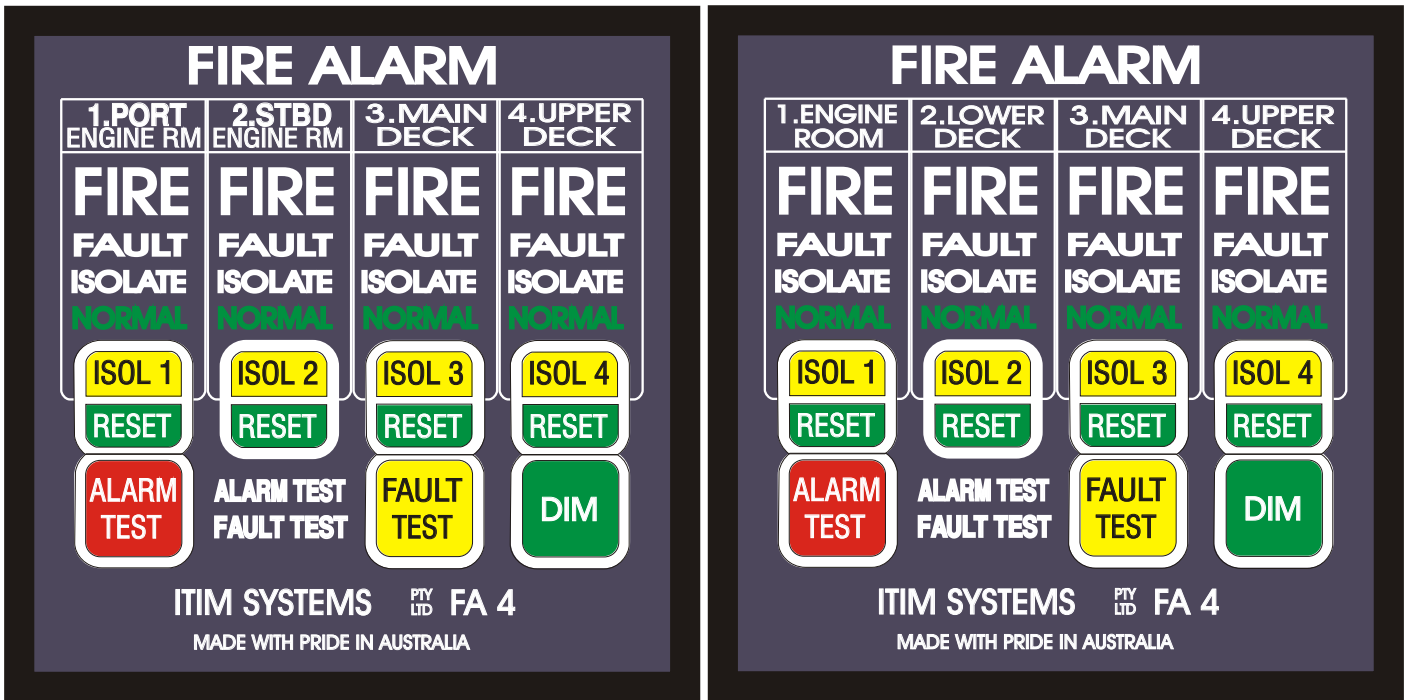
INNOVATIVE TECHNOLOGY FOR INDUSTRY AND MARINE
 P.O. BOX 218 RED HILL, QLD 4059, AUSTRALIA
 4 CRAMOND STREET, WILSTON, QLD 4051, AUSTRALIA
 ISD + 61 7. PHONE (07) 3356 1276. FAX (07) 3356 5693
<http://www.itim-systems.com> Email info@itim-systems.com



FA4 FOUR CIRCUIT FIRE ALARM & CONTROL PANEL.

The FA4 is a very compact, flush mounted, fully monitored, four circuit, Fire Alarm & Control Module, developed to protect the larger Catamaran and Mono-Hull vessels.

Good looking, compact, flush mount, modules with sealed Touch Switch Controls for greater reliability. Easy to use, with LED backlit, full System Status Display. Simple to install with two 12 way plug-in terminals on the rear for connection of ships wiring.



← 96 mm →

LED Backlit System Status Display

Each zone is individually monitored for **NORMAL**, **FIRE**, **ISOLATE** and **FAULT** conditions. In addition, common **ALARM TEST** and **FAULT TEST** indicators, illuminate when these functions are active. The easy to read System Status Display is backlit by colour coded LED light-bars for instantaneous status recognition.

Compact Flush Mount Module

The FA4 Fire Alarm Control Module is very compact. The panel facia measures only 96 x 96 mm (less than 4 inches square).

The FA4 is flush mounted with a dash cut-out size of 91 x 91 mm, and is secured by two adjustable mounting brackets off the rear of the module.

Overall panel depth = 175 mm.

All wiring terminates on two 12 way plug in terminals on the rear of the FA4 module.

Made with Pride in Australia

Available from

SEALED TOUCH SWITCHES

The FA4 panel facia incorporates seven sealed touch switches to provide individual Zone Alarm Isolate and Alarm Reset functions, Common Alarm Test and Fault Test Controls plus a dimmer control of normal indications for night time use.

ALARM TEST SWITCH

Pressing the ALARM TEST Switch simulates a **FIRE** Alarm Condition on all four detector circuits, to test local audible & visual alarm warnings & remote alarm outputs.

The red **ALARM TEST** indication illuminates. Pressing any Isolate/Reset switch will reset the Alarm Test function. After testing, press each ISOL/RESET switch twice to return all zones to the green **NORMAL** condition.

FAULT TEST SWITCH

Pressing the FAULT TEST Switch simulates a **Fault** Condition on all four detector circuits and tests local audible and visual fault warnings. The amber **FAULT TEST** indication also illuminates. Pressing any Isolate/Reset switch will reset the Fault Test function. After testing, press each ISOL/RESET switch twice to return all zones to the green **NORMAL** condition.

ISOLATE/RESET SWITCHES

The four zone ISOL/RESET Switches each perform a double isolate function.

When pressed once, it isolates the local audible alarms and remote alarm outputs for that zone. It resets internal alarm and fault latches and resets remote fire detector latches for that zone. The amber zone **ISOLATE** indication will also illuminate. The visual alarm & fault warning latches are also reset, but remain active. This serves to verify detector operation, as it will flash the red **FIRE** visual alarm immediately a detector operates, even when isolated. Similarly, visual **FAULT** warnings are reset but remain active when isolated.

When pressed a second time, The ISOL/RESET switch again resets internal Alarm and Fault latches and remote fire detector latches. It re-enables the local audible alarms and remote alarm outputs and returns that zone to the green **NORMAL** condition.

DIM SWITCH

Pressing the DIM Switch dims the Green **NORMAL** LED indications for night time use to assist in reducing wheelhouse light levels as an aid to navigation.

A **FIRE**, **FAULT** or **ISOLATE** Status condition other than **NORMAL**, is indicated at full brightness even when the Dim Switch is active.

LED Backlit System Status Display

The four green **NORMAL** status indications indicate all zones in the Normal ready to operate condition. The red **FIRE** status indications flash a red **FIRE** warning when a detector on that zone operates. The Red **FIRE** warning latches on internally and remains on until isolated or reset.

The amber **FAULT** status indications illuminates if a fault develops in that detector zone. A typical **FAULT** condition would include a break or high resistance joint in the detector zone wiring, a detector out of circuit or a low power supply voltage that could inhibit the FIRE Alarm operation.

The amber **ISOLATE** indications, indicates the Audible Alarms and Remote Alarms for that zone are isolated.

The red **ALARM TEST** indication illuminates when the ALARM TEST Switch is operated. The amber **FAULT TEST** indication illuminates when the FAULT TEST Switch is operated.

DETECTOR CIRCUITS

The four detector circuit inputs are each two wire circuits. They will power remote detectors upto 250 mA per circuit and are protected against excess current draw. These are compatible with a wide range of detector types including smoke, thermal, and flame detectors and manual switches.

An isolate/reset relay on each detector circuit removes power to reset remote detectors each time an isolate switch is operated.

ALARM OUTPUTS

The FA4 provides a change over, clean switched Common Alarm Relay Output with the change over terminals accessible to allow for all switching options.

An external link is factory fitted between terminal 16, (A 1.5 Amp protected +ve supply) and terminal 14 relay common. This protected positive supply is switched out on terminal 13 on activation of any alarm.

An alarm load in excess of 1.5 Amp can be connected by removing link between 14 and 16 and connect external protected supply up to 3 Amp Max,

Four individual zone, Remote Alarm Relay Driver Outputs (NPN @ 1.0 Amp Max) are provided. An Audible Alarm is incorporated to provide local Fire Alarm, Fault Warnings & switch operation verification.

POWER SUPPLIES

The FA4 has provision for connection of two independent DC power supplies. System will operate when either supply is active.

Power supply inputs are protected internally from reverse polarity, over voltage, excess current draw and induced power spikes etc.

All individual detector circuits, voltage regulators and zone alarm outputs are protected by PCL solid state current limiters.

The system will operate from 12 volt (when 5k ohms EOL resistors fitted) or 24 volt (with 10k ohms EOL resistor fitted).

Both DC power supplies must be the same nominal voltage.

WEEKLY TESTING On a regular basis, test the FA4 Fire Alarm & Control System.

Press the ALARM TEST switch to simulate an alarm condition on all four detector zones. Check that all four red visual **FIRE** indications illuminate and flash, and that the common audible FIRE Alarm operates. The red **ALARM TEST** visual status also illuminates.

Isolate the audible alarms for each zone by pressing each ISOL/RESET Switch in turn, the amber zone **ISOLATE** Status will illuminate.

Press each ISOL/RESET switch again to return all zones to the green **NORMAL** condition.

Press the FAULT TEST Switch to simulate a fault condition on all four detector Zones. Check that all four amber visual **FAULT** indications illuminate accompanied by a steady audible fault warning tone. The amber **FAULT TEST** visual status also illuminates.

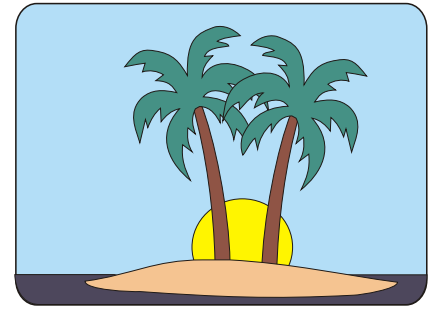
Isolate the audible fault warnings for each zone by pressing each ISOL/RESET Switch in turn, the amber zone **ISOLATE** indications will illuminate. Press each ISOL/RESET switch again to return all zones to the green **NORMAL** condition.

On a Regular Basis, check that the four green **NORMAL** indications are illuminated and that the FA4 is in the green **NORMAL** ready to operate condition.

ITIM SYSTEMS

PTY LTD

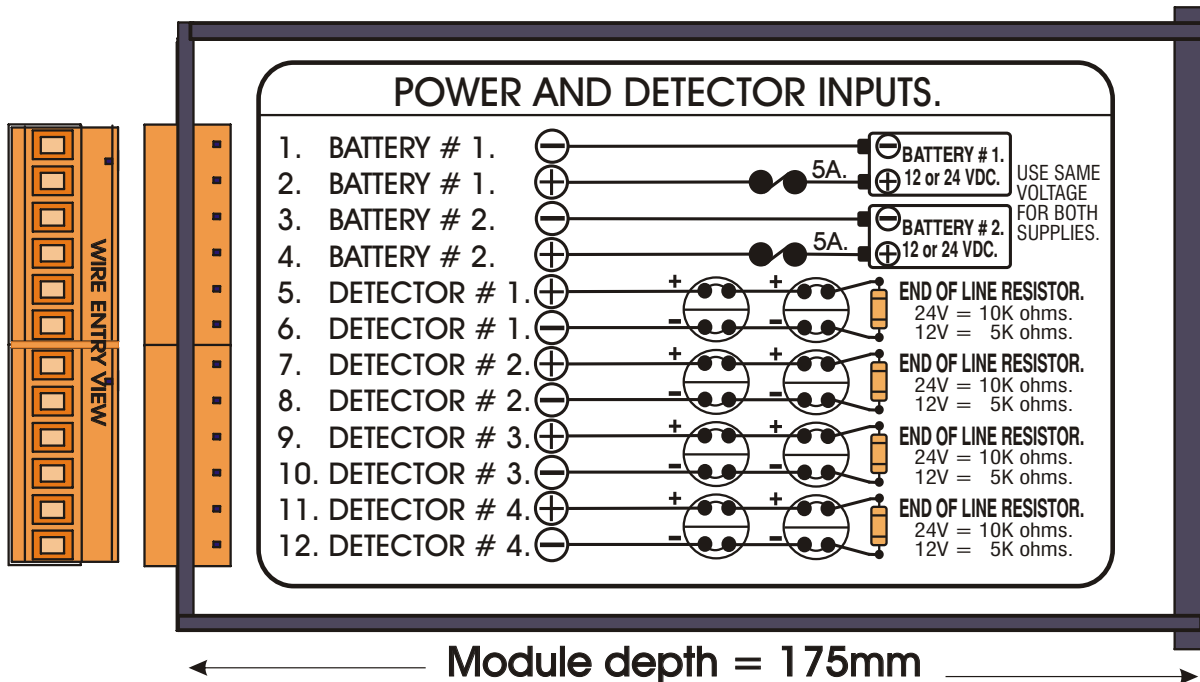
INNOVATIVE TECHNOLOGY FOR INDUSTRY AND MARINE
 P.O. BOX 218 RED HILL, QLD 4059, AUSTRALIA
 4 CRAMOND STREET, WILSTON, QLD 4051, AUSTRALIA
 ISD + 61 7. PHONE (07) 3356 1276. FAX (07) 3356 5693
 http://www.itim-systems.com Email info@itim-systems.com



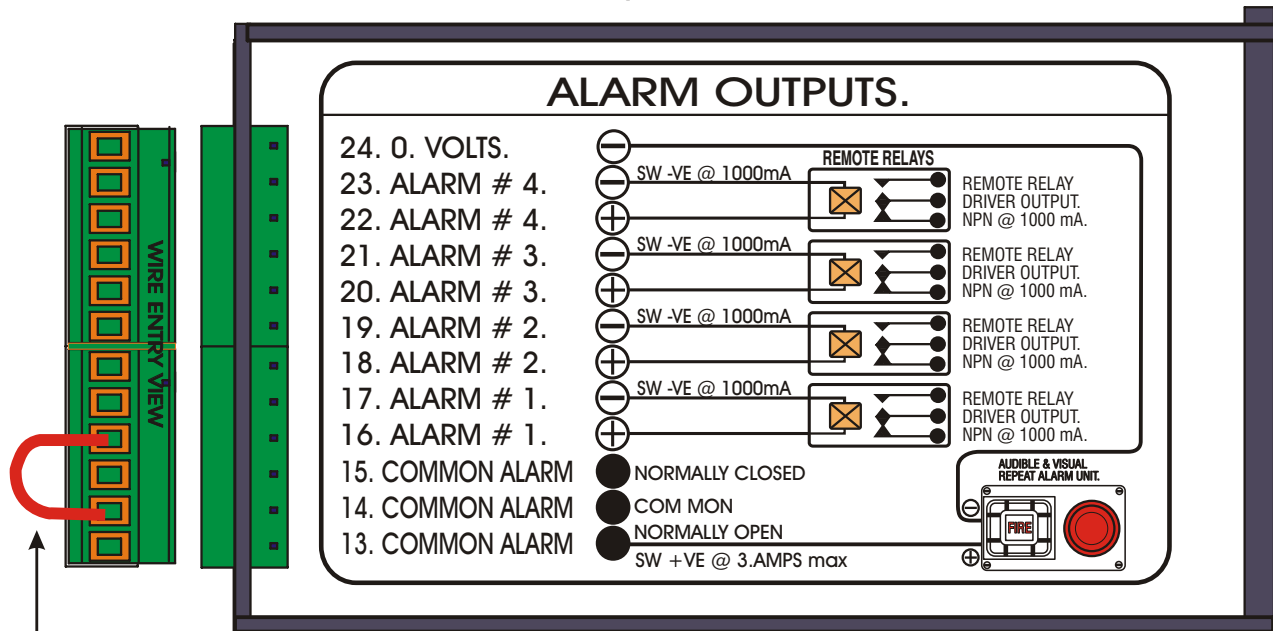
FA4 - WIRING

All wiring terminates on two plug in 12 way terminals on the rear of the FA4.

Terminal A. Is a 12 way input terminal for two independent power supplies (12 or 24 Volt DC) and four Fire Detector monitoring circuits.



Terminal B. Is a 12 way output terminal with Common Alarm relay output and four individual zone alarm outputs.



SIDE VIEW Dash cut out = 92x92 mm
 Made with Pride in Australia