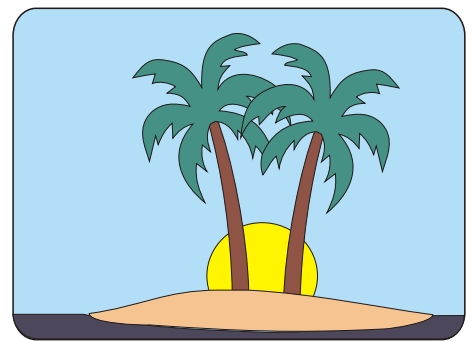


INNOVATIVE TECHNOLOGY FOR INDUSTRY AND MARINE  
4 CRAMOND STREET, WILSTON, QLD 4051, AUSTRALIA  
P.O. BOX 218 RED HILL, QLD 4059, AUSTRALIA  
ISD + 61 7. PHONE (07) 3356 1276. FAX (07) 3356 5693  
<http://www.itim-systems.com> email [info@itim-systems.com](mailto:info@itim-systems.com)



ACN No 010 471 897

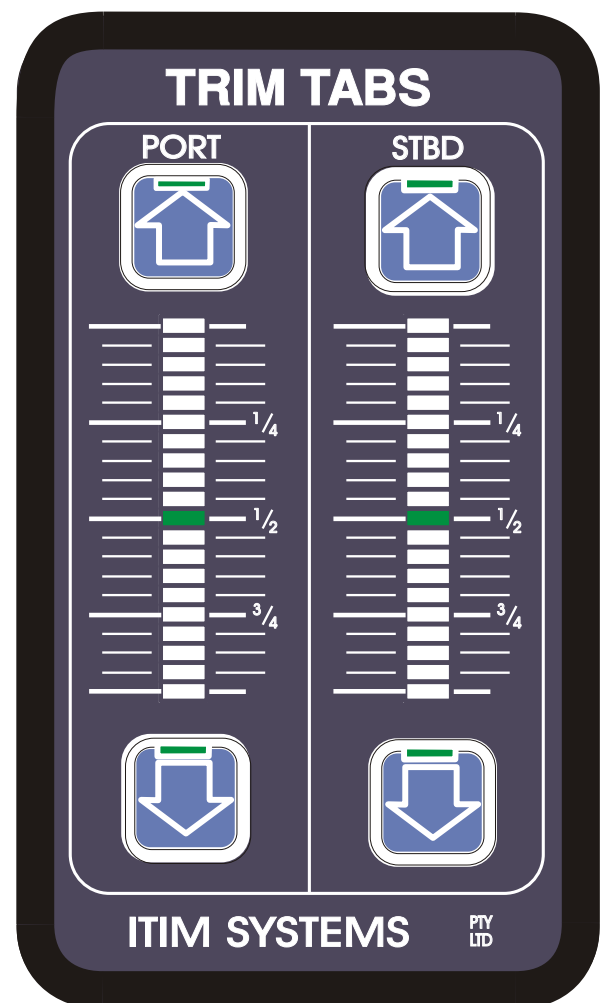
## TT2 TRIM TABS DISPLAY AND CONTROL MODULE

ATTRACTIVE, FLUSH MOUNT, TRIM TABS - DISPLAY & CONTROL MODULE.

HIGH QUALITY, RELIABLE SYSTEM - EASY TO INSTALL & SIMPLE TO USE.

- \* TWO 20 LED BARGRAPHS, PROVIDE FEEDBACK DISPLAY OF ACTUAL TRIM TABS ANGLE FOR OPTIMUM SETTING UNDER ANY CONDITIONS.
- \* EASY TO USE SEALED TOUCH SWITCH CONTROLS TO RAISE AND LOWER PORT OR STBD TRIM TABS.
- \* SUITS DUAL STATION VESSELS. ADDITIONAL TT2 PIMs, CAN CONNECT TO ORIGINAL ANGLE FEEDBACK SENSOR AND SOLENOID VALVE SET, TO PROVIDE DUPLICATE TRIM TAB ANGLE DISPLAY & UP/DOWN CONTROLS.
- \* AUTOMATIC LOCKOUT OF OPPOSITE SWITCH. IE. WHILE THE UP SWITCH IS PRESSED, THE DOWN SWITCH IS DISABLED, UNTIL THE UP SWITCH IS RELEASED.
- \* CLEAN SWITCHED RELAY OUTPUTS, (10 AMP MAX) CLOSE WHILE SWITCH IS PRESSED, TO ACTIVATE TRIM TAB HYDRAULIC SOLENOID CONTROLS.
- \* SIMPLE TO INSTALL, SEALED, FLUSH MOUNT, DISPLAY HAS TWO PLUG-IN TERMINALS ON REAR FOR ALL WIRING.
  - FOUR SETS OF RELAY OUTPUTS, TO SOLENOID VALVES.
  - POWER SUPPLY IN, 12 OR 24 VOLT DC.
  - TRIM TAB ANGLE, FEEDBACK SENSORS.

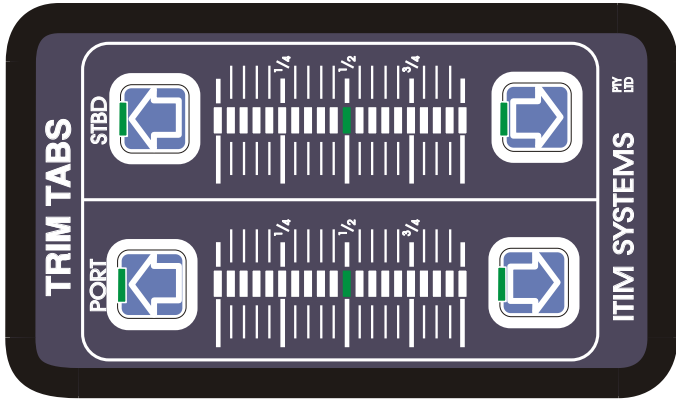
FLUSH MOUNT  
TT2 TRIM TABS PIM



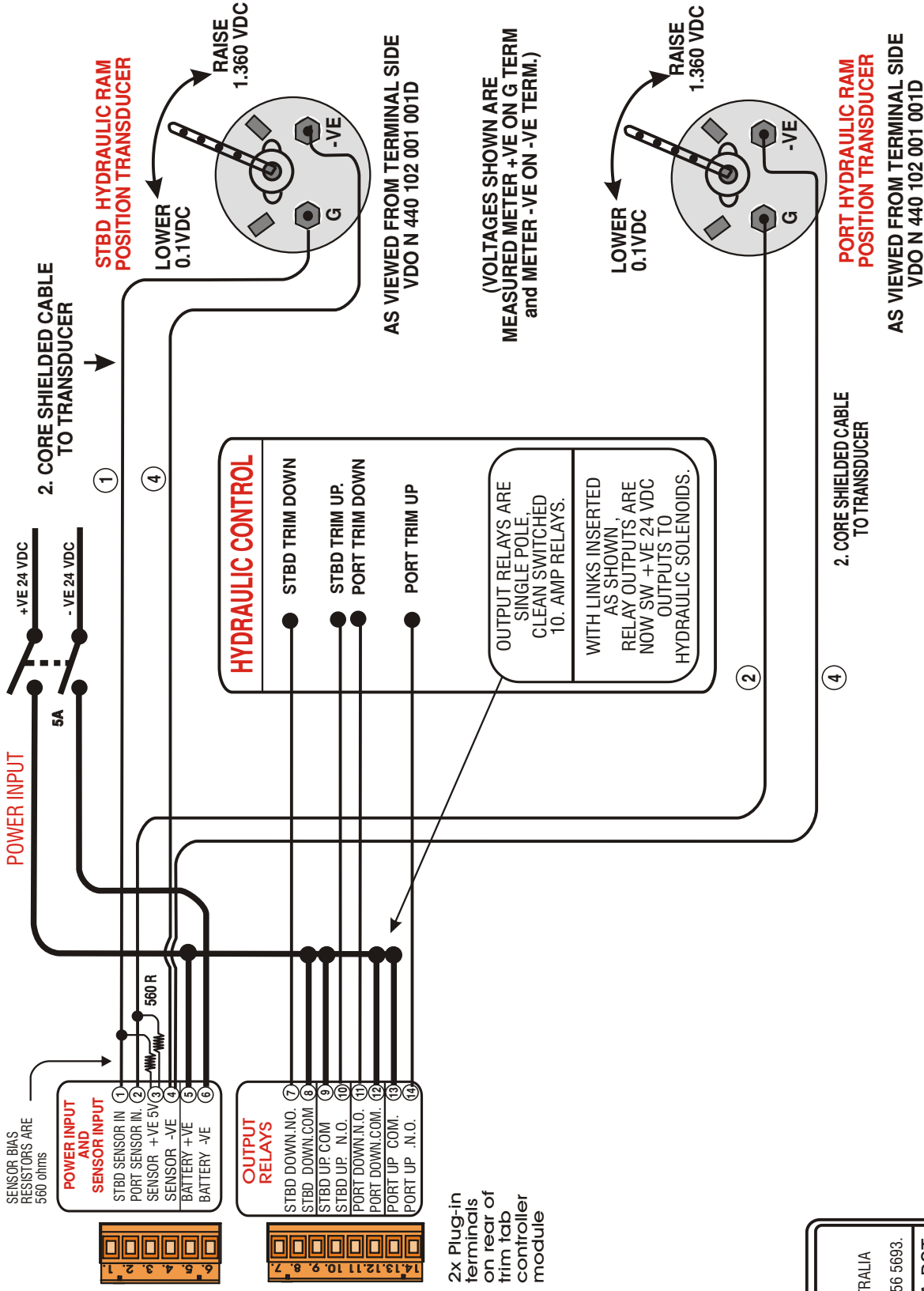
\* COMPACT 77x132mm,  
SEALED, FLUSH MOUNT, PLUG-IN,  
TRIM TAB DISPLAY & CONTROL MODULE.

MADE WITH PRIDE IN AUSTRALIA

AVAILABLE FROM



**WHEELHOUSE CONTROL**



SENSOR BIAS RESISTORS ARE 560 ohms

**POWER INPUT AND SENSOR INPUT**

1 STBD SENSOR IN

2 PORT SENSOR IN

3 SENSOR +VE 5V

4 SENSOR -VE

5 BATTERY +VE

6 BATTERY -VE

**OUTPUT RELAYS**

7 STBD DOWN.N.O.

8 STBD DOWN.COM

9 STBD UP.COM

10 STBD UP.N.O.

11 PORT DOWN.N.O.

12 PORT DOWN.COM

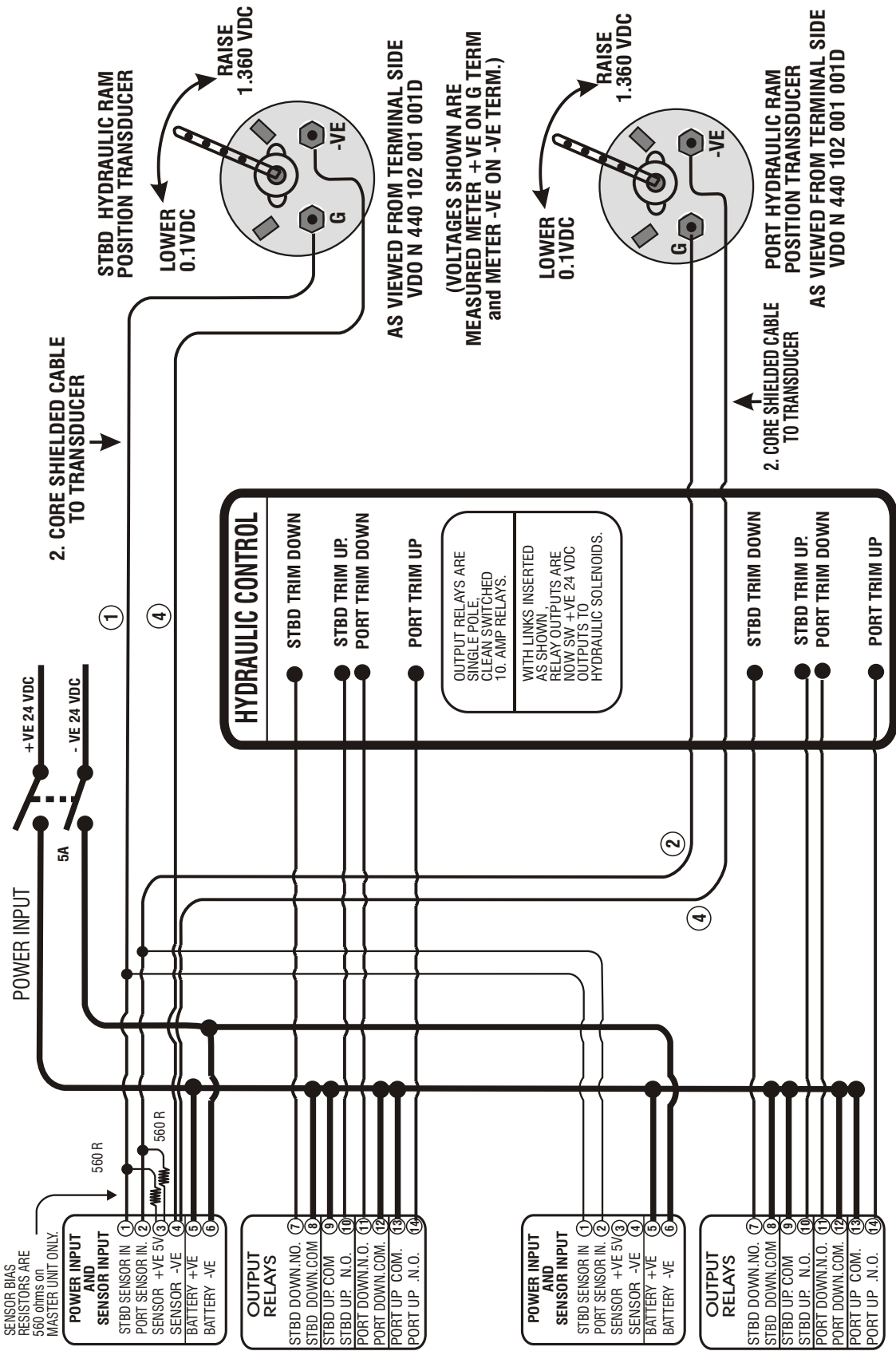
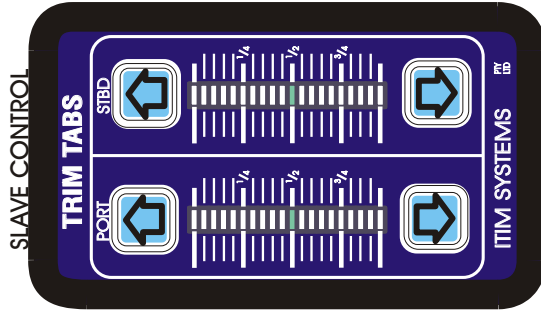
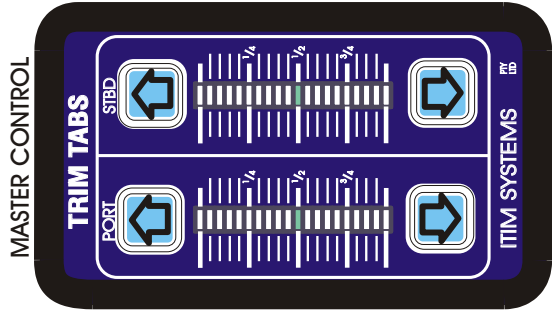
13 PORT UP.COM

14 PORT UP.N.O.

2x Plug-in terminals on rear of trim tab controller module

<b>ITIM SYSTEMS</b> PTY LTD 4. CRAMOND STREET, WILSTON QLD, 4051, AUSTRALIA PO. BOX 218, RED HILL, QLD, 4059, AUSTRALIA ISD + 61 7. PHONE (07) 3356 1276. FAX (07) 3356 5693.	
CLIENT	SITE WIRE WITH VDO R.A.POT
SUBJECT	TRIM TAB CONTROL PANEL WIRING SCHEMATIC
DRAWN	D.SCOTT
DATE	26-08-98
VERSION	01.
DRAWING NO.	
REVISION	NIL
	TRIMDATA.CDR

Visit our web site  
<http://www.itim-systems.com>  
 Email to [info@itim-systems.com](mailto:info@itim-systems.com)



THE CONTROLLER HAS FOUR ELECTRICAL ADJUSTMENT POTS ON THE ENDS OF THE HOUSING. THESE ARE USED TO ADJUST THE DISPLAY RANGE (IF REQUIRED), AFTER THE RAM POSITION TRANSDUCER HAS BEEN SET UP.

THE POTS HAVE BEEN PRESET FOR THE RANGE BETWEEN THE END STOPS OF THE TRANSDUCER.

THE CONTROLLER HAS DIGITAL INTERLOCKS SO UP AND DOWN SWITCHES CAN NOT BE BOTH ENABLED AT THE SAME TIME.

Visit our web site  
<http://www.itim-systems.com>  
 Email to [info@itim-systems.com](mailto:info@itim-systems.com)

<b>ITIM SYSTEMS</b> PTY LTD 4. CRAMOND STREET, WILSTON, QLD, 4051, AUSTRALIA P.O. BOX 218, RED HILL, QLD, 4059, AUSTRALIA ISD + 61 7. PHONE (07) 356 1276. FAX (07) 356 5693.	
CLIENT	<b>DYNA CRAFT LTD</b>
SUBJECT	<b>TRIM TAB CONTROL PANEL WIRING SCHEMATIC</b>
DRAWN	D.SCOTT
DATE	12/06/2000
VERSION	02.
DRAWING NO.	
REVISION	NIL
	<b>VDOTRWRIR.CDR</b>