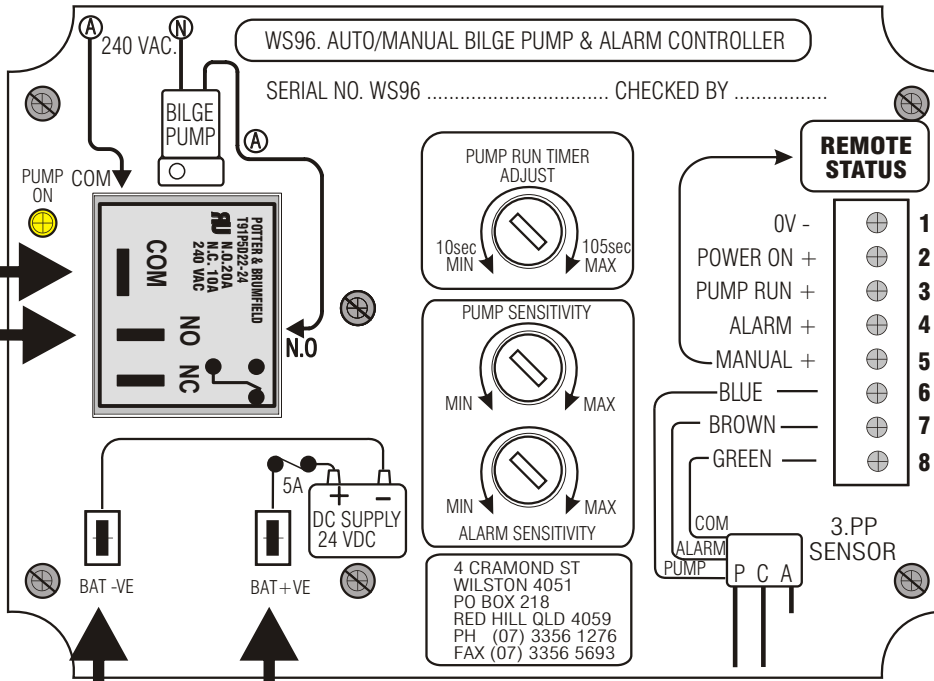


240 VAC.



COM

N.O.



ITIM SYSTEMS PTY LTD

TO REMOTE INDICATORS

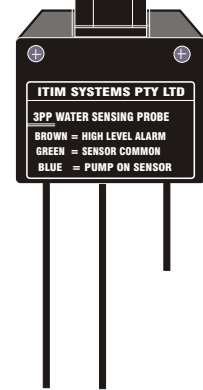
6-CORE DATA CABLE WIRE SIZE 16.020 (ONLY 5. CORES USED)

LOCAL MANUAL PUMP CONTROL SWITCH

3PP BILGE LEVEL SENSING PROBE

BAT -VE

BAT +VE



FOR 240. VAC. PUMPS

| | | |
|--|-----------------------------------|---------------------|
| ITIM SYSTEMS PTY LTD 4, CRAMOND STREET, WILSTON, QLD, 4051, AUSTRALIA P.O. BOX 218, RED HILL, QLD, 4059, AUSTRALIA ISD + 61 7. PHONE (07) 356 1276. FAX (07) 356 5693. | | |
| CLIENT | | |
| SUBJECT | WS96 WIRING SCHEMATIC (240. VAC.) | |
| DRAWN | D.SCOTT | DATE 15-11-96 |
| VERSION | 01 | DRAWING NO. |
| REVISION | NIL | WS96WIR2.CDR |

240. VAC BILGE PUMP

TO REMOTE INDICATORS

6-CORE DATA CABLE
WIRE SIZE 16.020
(ONLY 5. CORES USED)

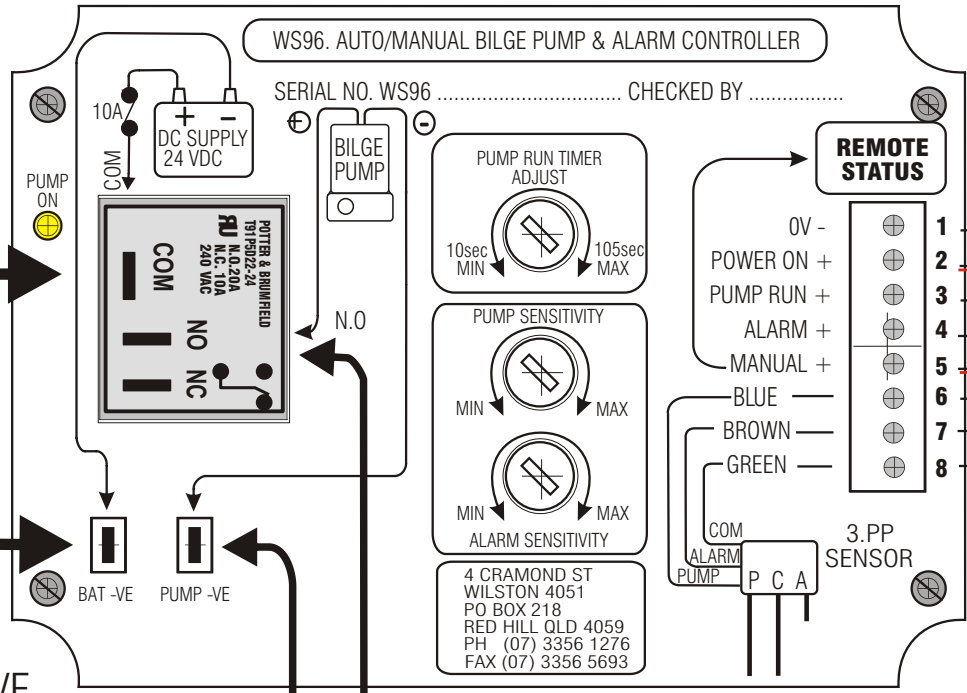
LOCAL MANUAL
PUMP CONTROL
SWITCH

3PP BILGE LEVEL
SENSING PROBE

FOR 24. VDC PUMPS

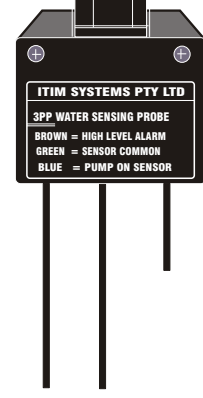
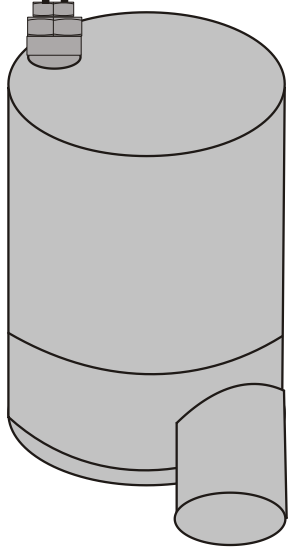
| | | |
|--|--------------------------------|---------------------|
| ITIM SYSTEMS PTY LTD 4, CRAMOND STREET, WILSTON, QLD, 4051, AUSTRALIA P.O. BOX 218, RED HILL, QLD, 4059, AUSTRALIA ISD + 61 7. PHONE (07) 356 1276. FAX (07) 356 5693. | | |
| CLIENT | | |
| SUBJECT | WS96 WIRING SCHEMATIC (24 VDC) | |
| DRAWN | D.SCOTT | DATE 15-11-96 |
| VERSION | 01 | DRAWING NO. |
| REVISION | NIL | WS96WIR1.CDR |

BILGE PUMP



ITIM SYSTEMS PTY LTD

4 CRAMOND ST
WILSTON 4051
PO BOX 218
RED HILL QLD 4059
PH (07) 3356 1276
FAX (07) 3356 5693



BAT +VE
10A

BAT -VE

PUMP -VE

PUMP +VE

COM

PUMP ON

SERIAL NO. WS96

CHECKED BY

WS96. AUTO/MANUAL BILGE PUMP & ALARM CONTROLLER

10A

COM

NO

NC

COM

NO

NC

COM

NO

NC

COM

NO

NC

COM

NO

NC

COM

NO

NC

COM

NO

NC

COM

NO

NC

COM

NO

NC

COM

NO

NC